



ALLIANCE RV

AFTERMARKET PARTS CATALOG

PARTS@ALLIANCERV.COM

MEET THE PARTS TEAM



(Pictured left to right): Brandy, Nayeli, Abbi, Heaven, Kaylee, Brenda, Jasmine, Megan, and Veronica.

Introducing the New Alliance Aftermarket Parts Catalog! All listed parts are immediately available for purchase through our dedicated Parts Department. If you are unable to locate the item you need, please email our team; we are happy to provide personalized assistance. We are committed to growth and will be continuously expanding our catalog with new inventory; make sure to check back frequently!

We value your feedback. Send us your suggestions for parts you'd like to see added.

ORDER NOW

@ PARTS@ALLIANCERV.COM



TIRE PRESSURE MONITORING SYSTEM & CAMERA OPTIONS



PART #36789

Upgraded Color Touch Screen Display



PART #36788

Basic Color Wide Screen Display



PART #36787

Cap Sensors (2 pack)
*requires 1 pack per axle

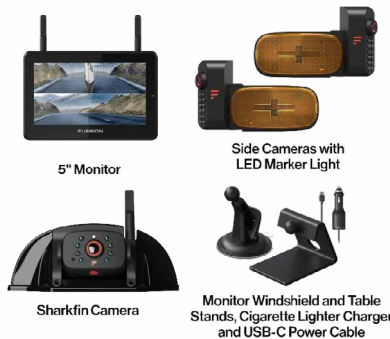
*NOT FACTORY PREPPED? NO WORRIES WE GOT YOU COVERED. EMAIL US FOR ASSISTANCE



PART #37528

Flow Thru Sensors (2 pack)

*for metal valve stems only



PART #37461

Furrion Vision S® + Camera Kit

*includes 5" Monitor, Marker Light Cameras, Rear Sharkfin Camera and Mounting Hardware



PART #37462

Furrion Vision S® + Camera Kit

*includes 7" Monitor, Marker Light Cameras, Rear Marker Light Camera, Rear Sharkfin Camera and Mounting Hardware

ORDER NOW

@ PARTS@ALLIANCEV.COM

BIKE RACKS & MISCELLANEOUS PARTS



PART #37463

CURT® Aluminum 2-Bike Tray-Style Receiver Hitch Rack w/ Lock



PART #37545

CURT® Steel 2-Bike Tray-Style Receiver Hitch Rack w/ Lock



PART #37469

Locking Fuel Cap for Valors
(Replaces ECI Standard Cap)



PART #36807

Bluetooth Keyless Entry System
(Right-Hand Doors)



PART #37467

Right-Hand Entry Latch Extension Kit



PART #35911

Thin Shade for Entry Door

Fits cutouts: 2.75" x 3.75"
Door thickness: 1.375" to 1.50"

ORDER NOW

@ PARTS@ALLIANCERV.COM

RV STEP COVERS & SOLERA AWNING ACCESSORIES



PART #37470

MORryde® 4 Step Tread Cover
*for 23.5" treads



PART #37471

MORryde® 3 Step Tread Cover
*for 19.5" treads



PART #37472

MORryde® 4 Step Tread Cover
*for 19.5" treads



PART #37464

Solera® Awning Heater



PART #37465

Awnbrella
*supports 2 pack for awnings 10-14'



PART #37466

Awnbrella
*supports 3 pack for awnings over 14'

ORDER NOW

@ PARTS@ALLIANCERV.COM

BLU TECH WATER FILTER & SINK COVERS



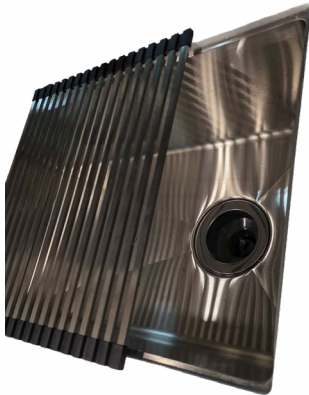
PART #33818

BLU Tech 10" Water Filter



PART #37201

**Water Filter Cartridge
Replacement**



PART #37237

**Roll-Up Sink Cover for Delta &
Avenue Sinks**



PART #11108

**Roll-Up Sink Cover for Paradigm,
Valor, & Benchmark Sinks**

Dimensions: 11.625" x 14.625"

Note: This cover rests over the sink opening and does not fit
inside the sink lip.

Dimensions: 25.5" x 14.75"

ORDER NOW

@ PARTS@ALLIANCERV.COM

INTERIOR LIGHTING



PART #10452

Ultra-Bright 5.75" LED Flush Mount Puck Light



PART #10448

12V LED Motion Light



PART #10451

4.5" LED Puck Light w/Switch



PART #25198

12V Flexible Gooseneck LED Reading Light - Warm White (3000K) with Built-in Switch - Black Finish

ORDER NOW

@ PARTS@ALLIANCEV.COM

INTERIOR AND EXTERIOR LIGHTING



PART #24006

**20" Clear Acrylic Drum Pendant
Light (TB) - Edison Bulb Ready**



PART #10454

Sensor w/Light



PART #30131

**Round Glass Interior Island
Pendant Light - Frosted
Black/Champagne Finish**



PART #10444

LED Tail Light (includes RFX6)



PART #10443

Clearance Light (Red)



PART #10442

Clearance Light (Amber)

ORDER NOW

@ PARTS@ALLIANCERV.COM

FURNITURE



PART #33144

Ottoman in Maura Taupe



PART #27540

**18" x 37" Ottoman Seat in
Mannington Taupe**



PART #31295

Marco Chair



PART #35946

Dinette Chair
in Surfside Maple or Chekov Briar



PART #32458

**Black Stained Dinette Chair w/
Storage - Seaport Licorice Fabric**

**MORE PRODUCTS
COMING SOON**

ORDER NOW

@ PARTS@ALLIANCERV.COM

ELECTRICAL PRODUCTS



PART #32622

**320 Watt Monocrystalline
Solar Panel**



PART #28712

200 Watt Solar Panel



PART #28711

**400 Watt Monocrystalline
Solar Panel (72 Cell, 24V)**



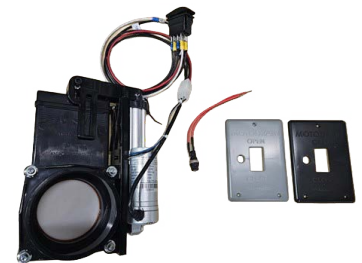
PART #13398

**12V Lithium-Compatible 3000
Watt Sine Wave Inverter**



PART #12123

**PD 1600 Series 2000W
Inverter w/Remote**



PART #36298 & #36297

**HXS Electric Termination
Valve Kit (w/ Locking Plug)**

Available in 1.5" and 3"

ORDER NOW

@ PARTS@ALLIANCERV.COM

EXTERIOR ACCESSORIES



PART #37943

**50 ft. Capacity Manual Power
Cord Spooler**



Slide Toppers

Call for more information



CURT® Helux™ Pinboxes

Call for more information



PART #37219

**TastePURE Portable
Water Softener**



PART #26136

Safe-T-Rail Grab Handle Kit



PART #37942

**30 ft. Capacity Motorized
Power Cord Spooler**

Fits cutouts: 2.75" x3.75"
Door thickness: 1.375" to 1.50"

ORDER NOW

@ PARTS@ALLIANCERV.COM

MISCELLANEOUS ACCESSORIES



PART #12860

Black Shower Corner Shelf



PART #15426

Spring Extension



PART #11104

Alliance RV Label Sheet



PART #10473

12V Tank Heater Pad (12" x 18") - 36" Lead



PART #11198

1.5" Black Magnetic Catch for Baggage Doors



PART #35877

MaxxAir Roof Vent Lid Replacement (Model 4751KS)

Fits cutouts: 2.75" x 3.75"
Door thickness: 1.375" to 1.50"

ORDER NOW

@ PARTS@ALLIANCE.RV.COM

MISCELLANEOUS ACCESSORIES



PART #11140

4-Inch Black Patio Door Security Latch



PART #28597

Folding Wall Hook - Black



PART #38172 & #38173

Underbody Storage
Available in 96" x 19.67" and 99.5" x 22.5"



PART #31698

Center Snap-In Cover - Black



PART #33274

Center Snap-In Cover - Chrome



PART #38579

Equalizers-Tandom AllTrek 4000

Fits cutouts: 2.75" x 3.75"
Door thickness: 1.375" to 1.50"

ORDER NOW

@ PARTS@ALLIANCERV.COM

MISCELLANEOUS ACCESSORIES



PART #37375

Reflex STS Suspension (Tandem)

**MORE PRODUCTS
COMING SOON**

**MORE PRODUCTS
COMING SOON**

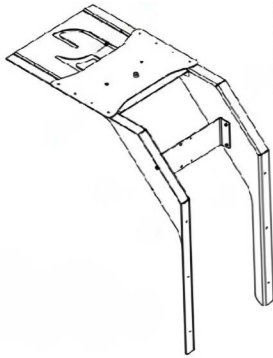
ORDER NOW

@ PARTS@ALLIANCERV.COM

MORRYDE SWIVEL AND PASS-THROUGH BRACKETS & FOLDING TABLE

MORryde® Swivel Table Bracket

PART #29200



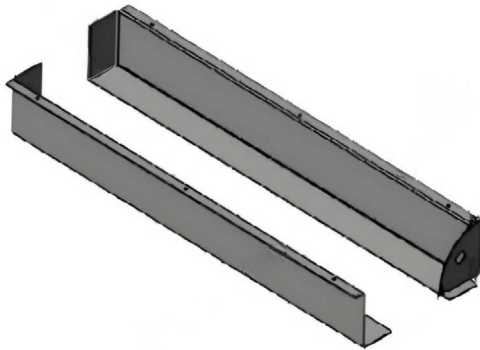
Maximize your space: This swivel bracket easily rotates your dinette table into an accessible desk.

1.8 % Incline.

Please verify your unit includes the necessary backing structure for installation. Absence of backing may require structural modifications.

Pass-Through Table Bracket

PART #24115



Effortlessly store your additional outdoor table. Brackets are secured to the upper surface of your storage compartment.

Single table storage.

6' Fold-In-Half Banquet Table

PART #24085



Durable, easy to clean, and built for heavy-duty use. Folds neatly to save space and features a carrying handle for maximum portability.

ORDER NOW

@ PARTS@ALLIANCERV.COM

ENTRY DOOR PROTECTION



Screen Shot - Screen Door Closer

PART #37492

26" Entry Door

PART #37493

28" Entry Door

PART #37494

30" Entry Door

Screen Defender

PART #37495

26" Entry Door

PART #37496

28" Entry Door

PART #16538

30" Entry Door



Push Bar - Screen Assist

PART #37497

26"-30" Entry Door

ORDER NOW

@ PARTS@ALLIANCERV.COM

PINBOX



| PART NUMBER | DETAILS |
|-------------|---|
| 38570 | Black/Blue Gooseneck Pin Box Replacement – 11,500 lbs Capacity |
| 38569 | Black/Blue Gooseneck Pin Box Replacement – 11,500 - 14,000 lbs Capacity |
| 38568 | Black/Blue Gooseneck Pin Box Replacement – 14,001 - 18,000 lbs Capacity |
| 38567 | Black/Blue Gooseneck Pin Box Replacement – 18,001 - 24,000 lbs Capacity |

ORDER NOW

@ PARTS@ALLIANCERV.COM

WATER FILTRATION & REPLACEMENTS



| PART NUMBER | DETAILS |
|-------------|--|
| a.38690 | Portable 3-Stage 5-Inch Water Filtration System Bundle (Includes Fittings & Hoses). |
| b.38691 | Portable 5-Inch 3-Stage Water Filtration System (Filter Unit Only). |
| c.38692 | 3-Stage 5-Inch Water Filtration System – Fixed Bolt-On Mount. |
| d.38693 | 0.2 Micron Replacement Filters for 5-Inch Systems (2-Pack). |
| e.38694 | Portable 3-Stage 10-Inch Water Filtration System Bundle (Includes Fittings & Hoses). |
| f.8695 | Portable 10-Inch 3-Stage Water Filtration System (Filter Unit Only). |
| g.38696 | 3-Stage 10-Inch Water Filtration System – Fixed Bolt-On Mount. |
| h.38697 | 0.2 Micron Replacement Filters for 10-Inch Systems (2-Pack). |
| i.38698 | Blu Tech Portable Water Softener with Stainless Steel Quick Connects. |
| j.38699 | Blu Tech UVC Faucet for Water Filtration Systems |

ORDER NOW

@ PARTS@ALLIANCERV.COM

MORRYDE® CARGO TRAYS



| FEATURE | DETAILS |
|---------------------------|---|
| Extension Options | Choose between 60% extension (36" to 90" length) or 80% extension (72" fixed length). |
| Width Range | Available in widths ranging from 20" to 52". |
| Accessibility (80% Trays) | 80% extension trays pull through both sides of the storage compartment for complete access. |
| Slide Mechanism | Features a smooth ball-bearing slide mechanism. |
| Weight Capacity | 60% Extension: 800 lb. capacity. 80% Extension: 500 lb. capacity. |
| Flooring | Durable carpeted flooring. |
| Installation | Includes a generic hardware kit. |
| Assembly | Unit comes fully assembled. |

Pricing and availability are determined on a case-by-case basis due to numerous size and extension options. To get a quote, please measure the width, length, and the compartment lip height.

ORDER NOW

@ PARTS@ALLIANCERV.COM

EXTERIOR DECALS



| PART NUMBER | COLOR | SIZE |
|-------------|------------------------------|----------------|
| a. 16129 | Chrome | 15.8" x 8.9" |
| b. 25260 | Black Metallic | 14.2" x 8.2" |
| c. 34162 | White (Letters Only) | 2.16" x 32.81" |
| d. 33614 | Slate Gray | 21.7" x 10.2" |
| e. 33617 | Black Stripe w/ Gray Letters | 98" x 6.3" |
| f. 34424 | Dark Smoke | 19.5" x 11.6" |
| g. 29340 | Alloy Metallic | 33.2" x 2.1" |

ORDER NOW

@ PARTS@ALLIANCERV.COM

BUILT INDEPENDENT

From luxury fifth wheels to ultra-light travel trailers and spacious destination models, our lineup is designed to match your lifestyle

At Alliance RV, our vision is to create a product driven by our customers, through their experience and input, and execute on those ideas at the highest level. Innovation and product development is best done in collaboration with the RVing community, and we are listening. Many of us here at Alliance RV have spent the majority of our careers in the RV industry, and we believe our RV owners and dealer partners will welcome an independent and truly different manufacturer that is transparent and dedicated to their customers.



DELTA

AVENUE

BENCHMARK

-VALOR-

PARADIGM

ALLIANCE

@ PARTS@ALLIANCERV.COM

Print date January 22, 2026 1:37 PM

